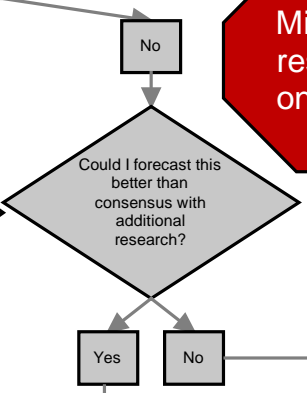
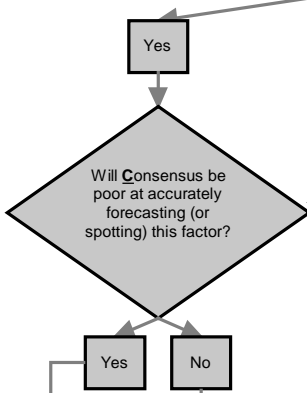
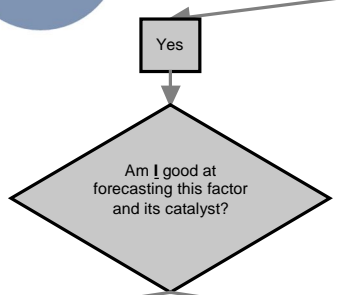
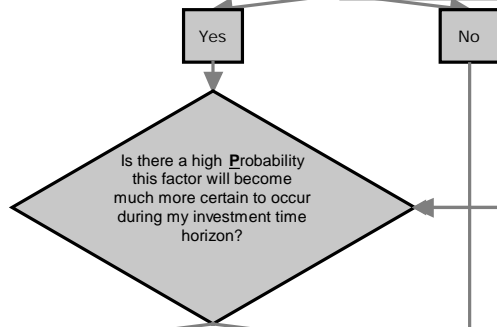
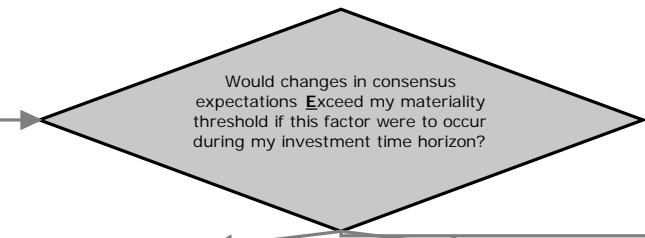


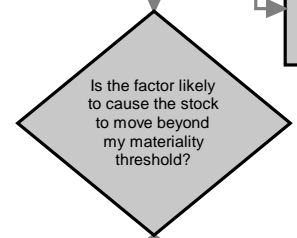
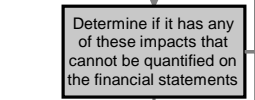
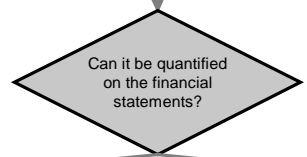
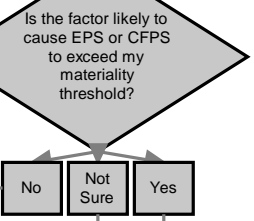
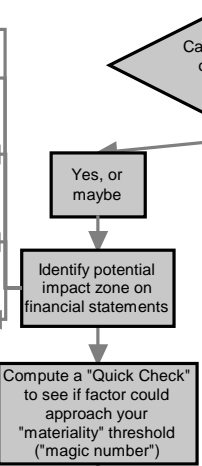
You are exposed to a new piece of information that could impact a stock within your assigned universe



Minimize research on factor

Weigh the cost vs. benefit of spending more research time on the factor

- Unit volume or transactions
- Pricing
- Costs (including borrowing costs and tax rate)
- Shares outstanding
- Returns or capital levels required to run the business



Cause enough change to the risk profile or volatility of the stock to move the stock beyond my materiality threshold?

Identify how the factor would change the volatility of future earnings or cash flow

Cause a change in management that would result in stock moving by more than my threshold?

Identify the premium or discount currently in the stock's valuation for existing management talent, compared to its peers

Cause a change in the likelihood the company is acquired?

Identify historical acquisition premiums for the sector

Likely critical factor that will generate alpha if forecast correctly